



Enable logging in IIS SMTP Server

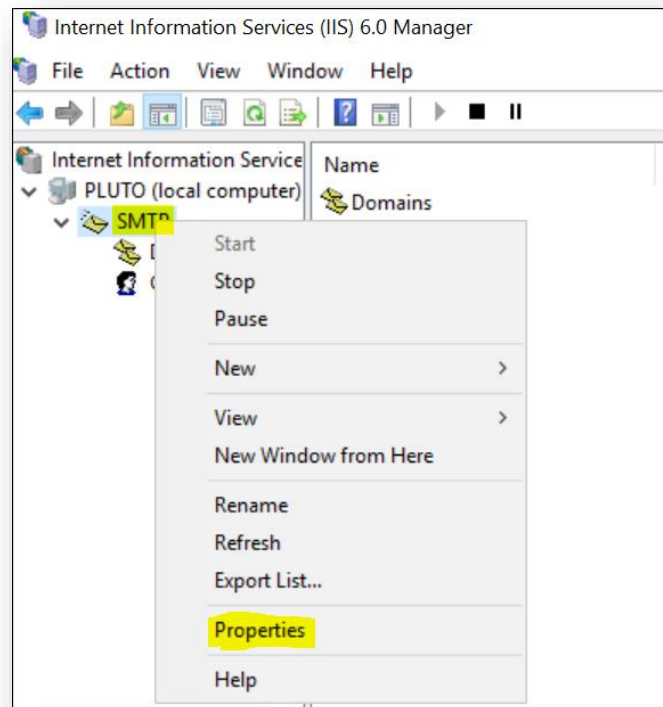
IIS SMTP Server 6.0



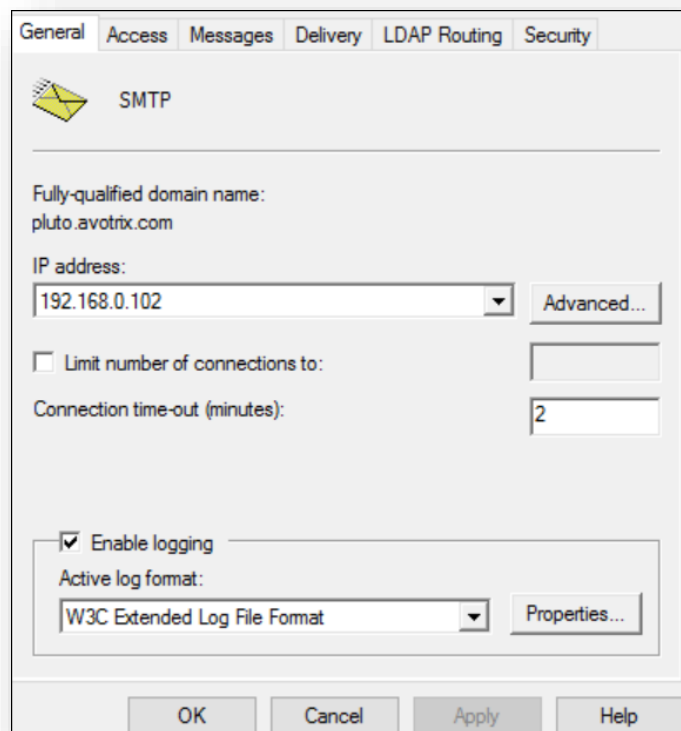
How to enable logging for IIS SMTP server in windows

To enable logging for IIS SMTP Server 6.0 in windows follow below given steps:

1. Go to IIS service manager, right click SMTP server and click on Properties.

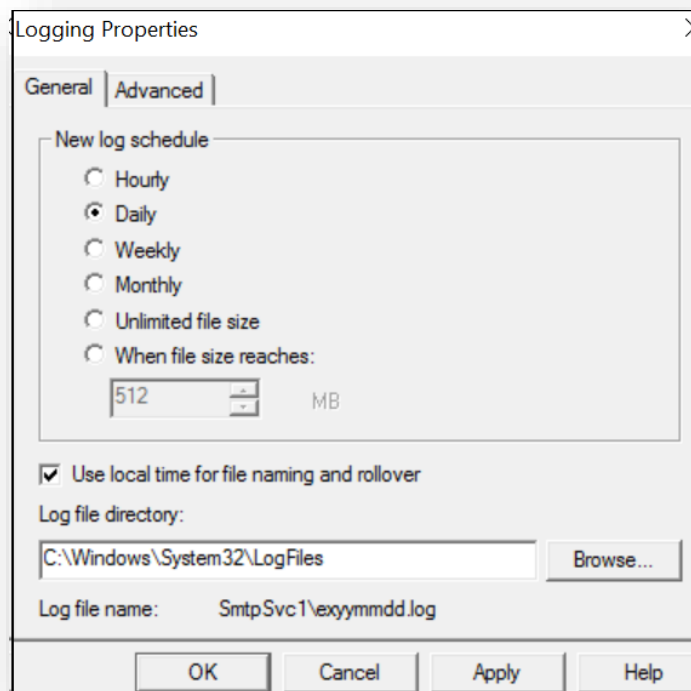


2. Select "W3C Extended Log File Format" and Check "Enable logging". Click properties for further configuration.

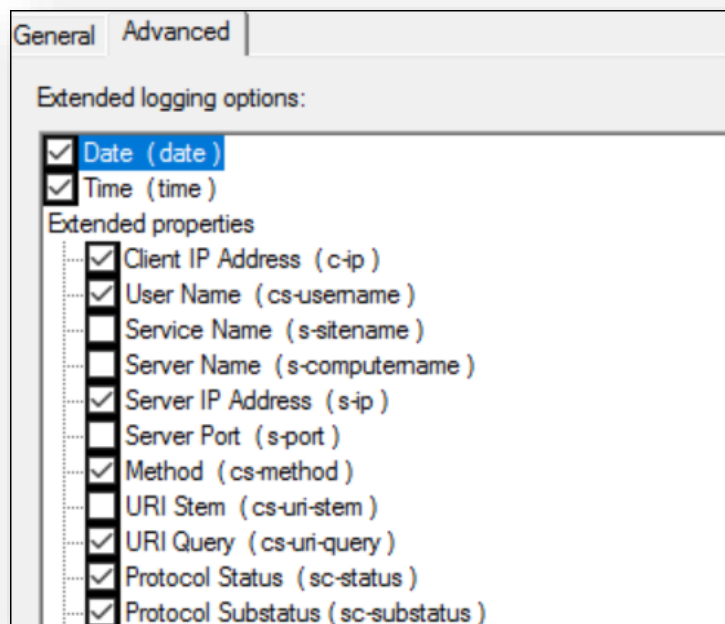


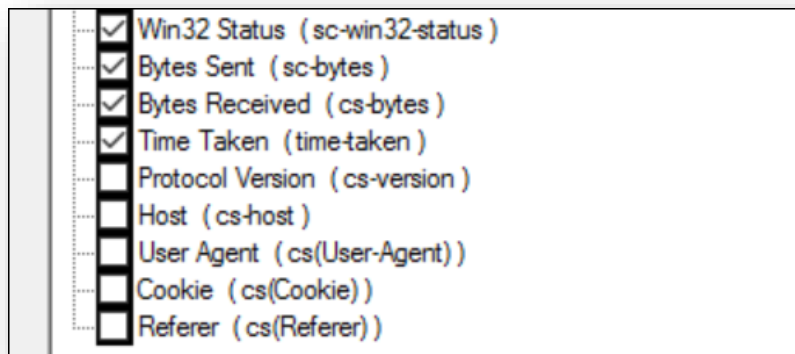
- The log file directory is where the logs will be stored. In this case, it is C:\Windows\System32\LogFiles\SmtpSvc1\exyymmdd.log. Click on the Advanced tab to configure logging.

Also select log schedule.



- For the most detailed logging, check everything and click ok or select only related field for critical details.





5. Click ok and **apply** changes

Check out our other Splunk Apps in SplunkBase.

ZyXEL Firewall
★★★★★ 3 ratings

osTicket Addon - Support Ticket System
★★★★★ 3 ratings

AVOTRIX
BIG DATA, CLOUD, IOT & ANALYTICS

Contact us

A-3/105, BLDG No. 2, Sector 1, MBP, Mahape
Navi Mumbai - 400 710
+91 989 244 4251 +91 777 700 4497
support@avotrix.com